



# sens

by  Crystal Nails®

2021 Spring / Summer



# sens by Crystal Nails®

## the SENSE of Nail Art

This brand has been waited for a long time now, everyone has to try it who wants to try themselves in the special world of the materials of nail art to express themselves. The brand of Sens reassure the same quality and reliability what we have had with the „parent brand“, the Crystal Nails, but it has new ways and possibilities of the usage of products. You can find strengthened base gel („liquid builder gel“) with silk strands in it, thick but flexible 3D decoration gels with matching brushes and last but not least very pigmented CrystaLacs (gel polishes for decoration). We present to you a very special, homogenous acrylgel (polygel) for sculpting and many more unique material and tool. An interesting fact about the Sens is the developing process includes Barbara Újvári, the ambassador of the Sens, besides the experienced developing team of Crystal Nails. Barbara and her breathtaking work are known for many all around the word. Her special abilities of education has been acknowledged in America, Asia and Europe. You can find her introduction and an interview with her in page 16.

**WE WISH YOU SO MUCH SUCCESS FOR YOUR WORK WITH SENS!**



BARBARA ÚJVÁRI

SENS Ambassador



ZOLTÁN JÁKOB

CEO of Crystal Nails

# sens

by  Crystal Nails®

2021 Spring / Summer



# NEW! 2021 Summer plasty gel

## NEW! SENS PLASTY GEL

*This playful nail art gel could get the fantasy alive.*

This is an extremely thick; plasticine consistency nail art decoration gel. We recommend to use a spatula to get the material out of the jar. Use 3D brush and cleanser for the working process. Non-cleansing product, it doesn't require any top gel, you can use above it. For the preparation, we recommend you to use your fingers and hands (if you're allergic, use gloves), you can also use the SENS by Crystal Nails Natural 3D brushes. We have 4 sparkling and 4 vivid color shade this season.

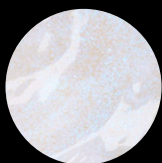
Recommended cure time: 1-2 min (LED), 2-3 min (UV).



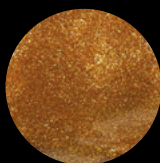
5ml



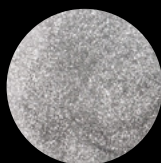
**Plasty Gel**  
Opal gold



**Plasty Gel**  
Opal blue



**Plasty Gel**  
Antique gold



**Plasty Gel**  
Silver



**Plasty Gel**  
Yellow



**Plasty Gel**  
Green



**Plasty Gel**  
Blue



**Plasty Gel**  
Brown



**Plasty Gel**  
Red



**Plasty Gel**  
Pink







sens  
by Crystal Nails®

PLASTY  
Opal Blue

sens  
by Crystal Nails®

PLASTY  
Antique Gold

sens  
by Crystal Nails®

color gel

sens  
by Crystal Nails®

PLASTY  
Opal Gold

Sens Plasty Gel  
Antique Gold

Sens Plasty  
Gel Silver

sens  
by Crystal Nails®

PLASTY Silver

sens  
by Crystal Nails®

PLASTY Red

sens  
by Crystal Nails®

color gel

sens  
by Crystal Nails®

PLASTY Green

Sens Plasty  
Gel Red

Sens Plasty  
Gel Green

Sens Plasty  
Gel Yellow

sens  
by Crystal Nails®

PLASTY Yellow

Sens  
Plasty Gel  
Pink

sens  
by Crystal Nails®

PLASTY Brown

sens  
by Crystal Nails®

color gel

Sens Plasty  
Gel Blue

sens  
by Crystal Nails®

PLASTY Blue

sens by  Crystal Nails®

# NEW! 2021 Summer flash 3G polish

## NEW! SENS FLASH '3G POLISH'

Light reflective and sparkly 3G Polish and if it's under an intensive light, it will be shiny and sparkly. In normal circumstances it's "only" a very vivid and sparkly gel polish. But if it gets a light from the side or from the back it will be very shiny and sparkly. If you use a matte top gel, it will have a beautiful marble effect. Any way you use it, it will be spectacular!



## NEW! SENS SKETCH PEN

Light and pale shade of this product help to make a sketch on to the surface before creating any patterns. Makes faster the nail art creating process.



*This nail was made with the Sens S001, S002, S003, S005, S007, S009 3G Polishes by Kesztyűs Dóra.*







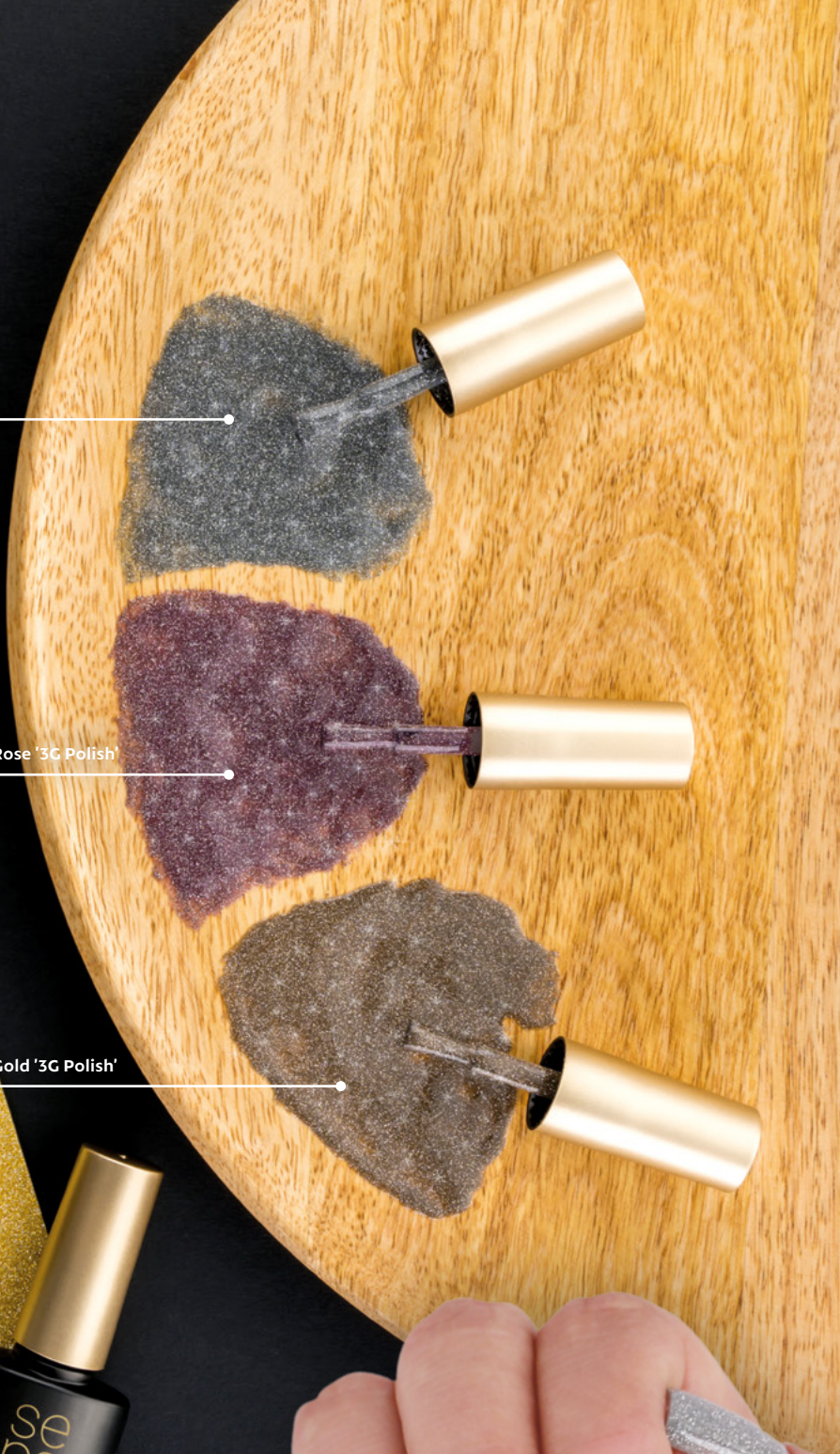
Sens Flash Silver '3G Polish'



Sens Flash Rose '3G Polish'



Sens Flash Gold '3G Polish'



sens by  Crystal Nails®

This nail was made with the new Sens Flash Gold and Silver 3G Polish by Újvári Barbara.



# 2021 Spring base & top gel

## SENS BASE GEL

*Base gel developed for especially for strengthening technique.*

*"Liquid-like builder gel"*

Base and strengthening gel with extra cohesion. This is the strongest known Base Gel on the market right now, specially developed for strengthening technique. Due to its special component, it is unique among base gels. It has tiny little artificial silk strands in it, making the product thicker and more flexible. Beyond that; this new technique can help with the preparation of the surface and C-curve, due to its consistency, it will not flow over the lateral nail fold or near the cuticle. It can also help with the cohesion too speeding up the process. The product contains vitamin 'E' and calcium. The order of base gels by cohesion: Sens Base Gel, Compact base Gels, Builder Base Gel, Universal Base Gel, (Easy Off Hardener Gel). This product will not get hot during the curing, remains flexible and it will not break. You can use it both in LED and UV Lamps.

4ml



## SENS TOP GEL

*Long lasting and non-cleansing top gel for preserving the original shade of colors.*

Long-lasting, non-cleansing, bright and shiny top gel. The unique feature of this product is the lack of the material what makes the colours more vivid, thus preserving the true shades of the colours. The consistency is medium, it won't flow easily so you can work in a bit thicker layer with it in order to get a smoother surface.

4ml



## SENS '3G POLISH' CLEAR 0

*Multifunctional help to gel polish.*

This is a thicker kind of cleansing top gel, which helps you with your nail art and decoration. It can be used to attenuate or to weaken the (vivid) colours. when you're doing decorations with gel polish because of the cohesive layer after curing. Due to the thickness, it can also be used for making in-build decorations.

4ml







This nail was made with the S003 3G Polish and the Sens Top Gel  
by Sárközy-Eigner Roxana.

sens by  Crystal Nails®

# 2021 Spring 3G Polish

## SENS '3G POLISH'

### *Highly pigmented nail art gel polishes*

These are thick and highly pigmented gel polishes. These 3 step CrystaLacs can cover the surface in just one thin layer. Made especially for gel polish decoration techniques. This product line has 10 starting colours which you can mix with each other, so you can create the required shades for any nail art and patterns. If you would like to weaken the colours or make them less vivid, we recommend you the Sens by Crystal Nails Gel Polish CLEAR 0. You can use it on the whole surface, but not the usual way as we use gel polishes: you have to get a small amount of material on the brush and push the brush a bit harder while you apply it on the surface. Use it in a thin layer and use a strong LED lamp for curing. Make sure, you cure them a little longer than the usual 3 Step CrystaLacs (especially the S007 Black).

Cure time: 1-2 min (LED), 2-3 min (UV).



4ml



S001

S002

S003

S004

S005

S006

S007

S008

S009

S010

## SENS NAIL ART PEN

### *Nail art needle pen for sharp lines and unique designs.*

This product is 0,03mm thin, black nail art needle pen which can help you prepare the patterns you want to draw on the nail as a decoration; or it can make the already decorated nail surface more unique. This product is a big help for anyone who has difficulties drawing with gel polish, working with this could make the decoration process stress-free because drawing is always easier than painting. This pen provides you the possibility of the constant line, so it would be gap free and the line wouldn't break at any point. This product can make the whole decoration process fun and joyful.

Recommended usage: On the top of the fully cured top gel, matte the surface with a #180 file. We don't recommend to use this after a Matte Top Gel, but if you insist to use it anyway, the best you can do is cover it with Sens Top Gel and after that apply a layer of matte gel.





# new! step by step



Sens S010 '3G Polish'

Sens S009  
'3G Polish'

Sens S008 '3G Polish'

Sens S007  
'3G Polish'

Sens S006 '3G Polish'

Sens S005  
'3G Polish'

Sens S004 '3G Polish'

Sens S003  
'3G Polish'

Sens S002 '3G Polish'

Sens S001  
'3G Polish'

**1**

Make a manicure and I make matte the surface of the nail with fine buffer. Use a Nail Prep Spray and Acid Free Primer.



**2**

Make a base layer with Sens Base Gel, cure it.



**3**

Strengthen the C-curve with a 2nd layer of Sens Base Gel.



**4**

Apply 1 or 2 layer of S003 Sens 3G Polish as you wish.



**5**

Apply a layer of Sens Top Gel.



# NEW! 2021 Summer acrylgel

## NEW! SENS ACRYLGEL

*The homogenous polygel which combines the best qualities of acrygels.*

This is the upgraded version of acrylgel polygels. The consistency is homogeneous and it has excellent coverage. After curing, it is an almost dry surface. Thicker than the others, so they keep the shape better but require a stronger brush to work with. For starters we have clear, cover pink, and white colours. They won't burn during curing. For creating the white part of the french nail, we recommend to make a clear base foundation level. We recommend to use



30ml



## SENS ACRYLGEL ASSISTANT

*Gentle to the brush, easy to work with.*

Special shaping liquid for our AcrylGel. With the help of this product, you can work without the brush drying out. A small amount of this liquid is enough for stopping the AcrylGel to stick to the brush. It has a nice, tutti-frutti scent.



50ml



*This nail was made with the Sens Cover Peach AcrylGel, the S001, S004, S009 3G Polishes, Plasty Gel Brown pink and yellow by Újvári Barbi.*



# new! step by step

Sens AcryGel  
ASSISTANT

Sens AcryGel  
COVER PINK

Sens AcryGel  
CLEAR

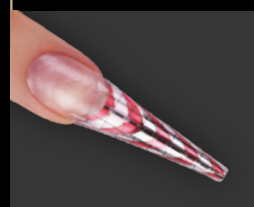
1

Prepare the nail: after the manicure, make the free edge short enough. Make the surface matte and put on the form.



2

Apply a less amount of Sens AcryGel Clear on the nail. Create a thin base layer with the help of the Sens AcryGel Assistant and the Sens 3D L Brush. Cure it for 1-2 min in LED lamp.



3

Create the nail bed with Sens AcryGel Cover Pink, the Sens AcryGel Assistant and the Sens 3D L Brush. Cure it for 1-2 min in LED lamp, cleans it, and file the smile line. Remove the form.



4

After removing the dust, apply a layer of Sens '3G Polish' S001 white gel polish in order to create a higher contrast. Cure it for 1-2 min in LED lamp.



5

Create the free edge with the Sens AcryGel White with the help of Sens AcryGel Assistant and the Sens 3D L Brush. Cure it for 1-2 min in LED lamp. Cleans the nail and shape it with file.



4

Cover it with Sens Top Gel and cure it for 2-3 min in LED lamp.





# 2021 Spring brushes

## SENS SYNTHETIC ROUND BRUSH

*Effective and multifunctional tool for creating nails with gel.*

Brush for gel sculpting with artificial hair, with a softer and longer design. This ensures a smoother application on the surface of the nail. The round edges help to work the gels around the cuticle in order to create the smile line. You can also use it for the precise painting of the gel polish or covering the whole nail surface.



## SENS NATURAL 3D PRODUCT-LINE

*Brushes for using the unlimited potential Plasty Gel.*

Specially developed for the Plasty Gel in 4 different sizes and natural hair in it. The body of the hair on the brush is wide but the end of it is pointy and slim. This design makes it easier to sharp shape creations. For the optimal usage it is recommended to use a little amount of cleanser (non-coloring, non-scented).

### 3D XS/S sizes:

These are best for creating small patterns. It provide us the opportunity to be more creative and artistic. You can use for gel polish decorations (e.g. flowers, leaves).

### 3D M sizes:

Less amount of materials. Due to the size of the hair of the brush, it makes us easier to work with it more precisely. Not so flexible, so it's possible to put pressure on it.

### 3D L sizes:

Recommended for bigger amount of materials and for creating bigger patterns. Due to its flexibility, it is good for filling the acrylic nails as well.







This nail was made with the Sens Cover Peach AcrylGel, SS01, S004, S009 Sens 3G Polish, Plasty Gel Brown, Pink and Yellow.

sens by  Crystal Nails®

# NEW! 2021 Summer brushes

## NEW! SYNTHETIC BLEND

*Developed for one move techniques, shadowing. It has artificial hair in it.*

Flat, horizontal, sidelong and beveled brushes; they can make your work easier. They can be used for gel or acrylic paints as well. In order to choose well, consider the size of the pattern what you want to create.

S: for small patterns and for shadowing

M: for small patterns

L: for bigger patterns



## NEW! SYNTHETIC LINER

*Especially developed for creating lines with artificial, thin hair in it.*

S: 3 mm, very small, thin for short lines and small patterns.

M: 6 mm, for contouring, medium long lines. Also, you can use it for glue gels and applying rhinestones and mini beads.

L: 9 mm, for longer thicker straight lines.





# NEW! 2021 Summer brushes

## NEW! NATURAL LINER

Developed for acryl and aquarell painting techniques with natural hair in it. Creating thin lines and precise patterns with it is effortless.

NEW



2021 summer

## NEW! NATURAL SHADOW

Natural Shadow: thick, wild, shape of a cylinder. It has a natural hair in it. For shadowing, bigger patterns. Use it for techniques with acryl (not acrylic) and aquarell materials.

NEW



2021 summer

## NEW! SYNTHETIC ART

Perfect for gel painting, creating petals and flowers and for shadowing. This is a small brush shaped as a cat tongue. It has a fine, soft, flexible and artificial hair. Use it for thicker nail art gels: Art Gel, Art Gel Pro.

NEW



2021 summer

This nail was made with the Sens CoverPink AcrylGel, 001, 007, 008, 009, 010 3G Polish by Magyarosi Barbara.